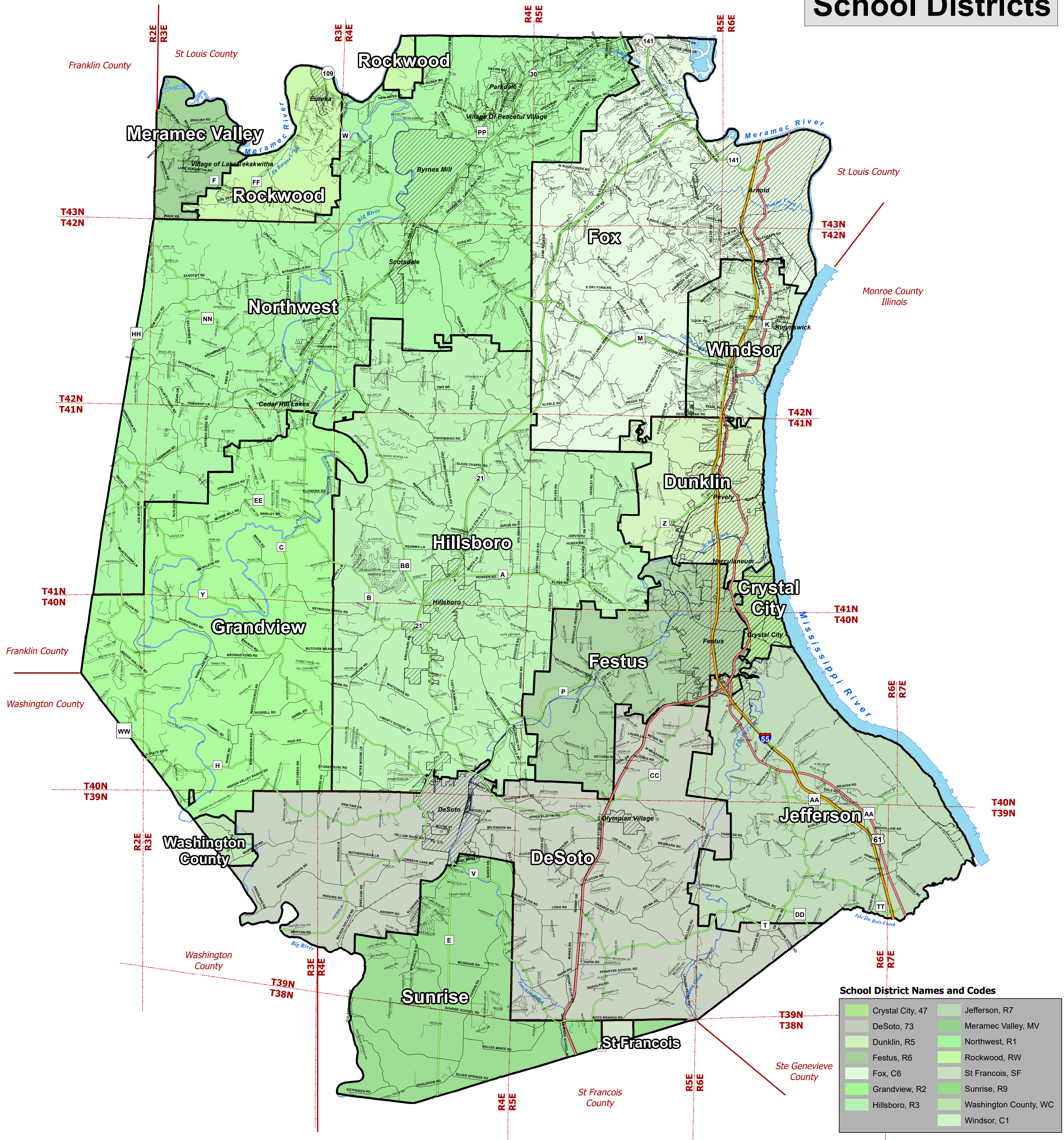


School Districts



School District Names and Codes

Crystal City, 47	Jefferson, R7
DeSoto, 73	Meramec Valley, MV
Dunklin, R5	Northwest, R1
Festus, R6	Rockwood, RW
Fox, C6	St Francois, SF
Grandview, R2	Sunrise, R9
Hillsboro, R3	Washington County, WC
	Windsor, C1

Jefferson County
 Department of the County Assessor
 Bob Boyer, Assessor

Map Title: **Districts**
 Print Date: 3/13/2023

CAUTION
 This map is for tax purposes only. It is not intended nor sufficiently accurate to be used for conveyances. Any use other than for tax purposes shall be at the user's risk. The reproduction or copying of this map or any part thereof by any process is prohibited without the written permission of the Department of the County Assessor.

Pursuant to 2 CSR 90-65.080: "This Cadastral Map is for informational purposes only. It does not purport to represent a property boundary survey of the parcels shown and shall not be used for conveyances or the establishment of property boundaries." Authority: section 60.670, RSMo 2016.

Infrastructure

- City Street
- County Road
- Local Roads
- Festus Special
- Railroads
- State Route
- State Road
- US Highway
- Interstate

Hydrography

- Rivers/Creeks

Boundaries

- Township and Range
- Municipalities

www.jeffco.mo.gov/assessor
 gisassessor@jeffco.mo.gov
 636-797-5466

Data Source: Department of the County Assessor, Jefferson County 911 Division, East-West Gateway Council of Governments

Scale: 1:96,000

0 0.5 1 2 3 4 Miles

Coordinate System: NAD 1983 State Plane MO East FIPS 2401 US Foot
 Projection: Transverse Mercator